



Four Interconnected Trail Systems April 2023 12 - Community Connectors 1-800-592-2217



Town of Kimball
City of Mullens
Town of Pineville
City of Welch



City of War
Town of Gary
City of Welch



Town of Keystone
Town of Northfork



Town of Bramwell
Town of Matoaka
Montcalm

Trail Rules

USER PERMITS are required for all operators and passengers. Everyone must wear a DOT or SNELL approved helmet and eye protection.

No child under the age of 6 (six) years allowed on any trail.
ABSOLUTELY NO BOOSTER SEATS OR CAR SEATS ALLOWED.
If your child is required by state law to use a booster seat or car seat in a vehicle then your child cannot ride as a passenger on the trails.

All operators and passengers on an ATV, UTV or off-road motorcycle must follow manufacturers' recommendations.

ABSOLUTELY NO ALCOHOLIC beverages may be consumed or carried.

Trails are only open during daylight hours. Obey all posted traffic signs, no glass containers, no fires. Stay on marked trails.

Never go off trail. No competitions.

All persons under the age of 16 must remain within sight of their parent or guardian at all times.
Violation of any rule is subject to a misdemeanor.

Community Connector Etiquette

Remember – People Live In These Communities

Riding in Town is not a right, it is a privilege

Slow down when entering a community

Watch for Children playing

Keep engines as quiet as possible

Try not to kick up dust

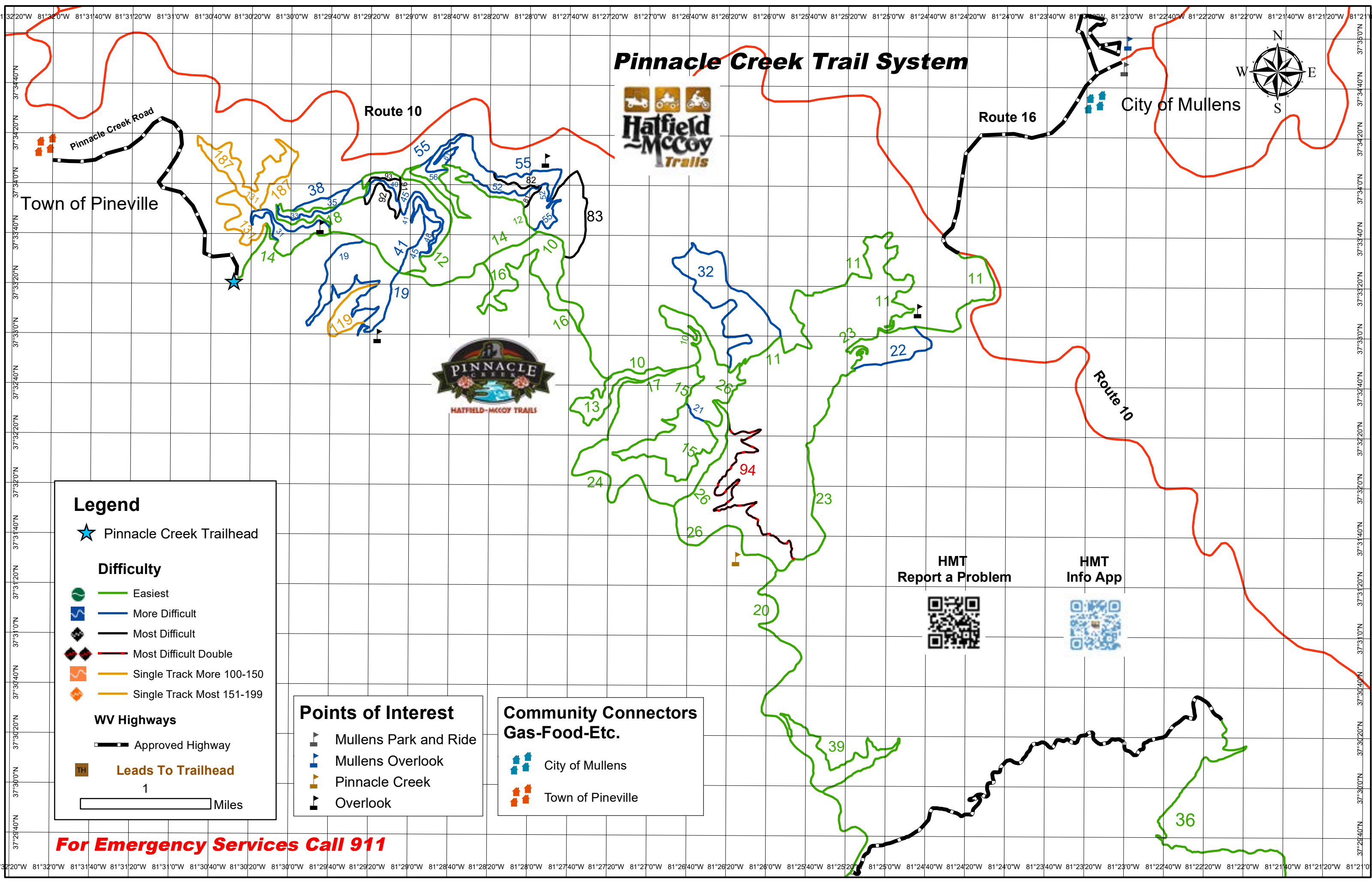
Be courteous

HMT APP



For Emergency Services Call 911

Pinnacle Creek Trail System



Legend

★ Pinnacle Creek Trailhead

Difficulty

- Easiest
- More Difficult
- Most Difficult
- Most Difficult Double
- Single Track More 100-150
- Single Track Most 151-199

WV Highways

Approved Highway

Leads To Trailhead

1 Miles

Points of Interest

- Mullens Park and Ride
- Mullens Overlook
- Pinnacle Creek
- Overlook

Community Connectors Gas-Food-Etc.

- City of Mullens
- Town of Pineville

HMT
Report a Problem

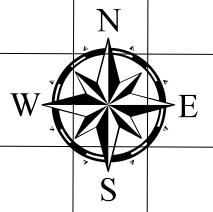


HMT
Info App



For Emergency Services Call 911

Pinnacle Creek/Indian Ridge/Warrior Connector



Legend

Difficulty

- Easiest
- More Difficult
- Most Difficult
- Most Difficult Double
- Single Track More 100-150
- Single Track Most 151-199

WV Highways

- Approved Highway
- Leads To Trailhead

1 Miles

Trail System Divider

- Pinnacle Creek/Indian Ridge Dividers

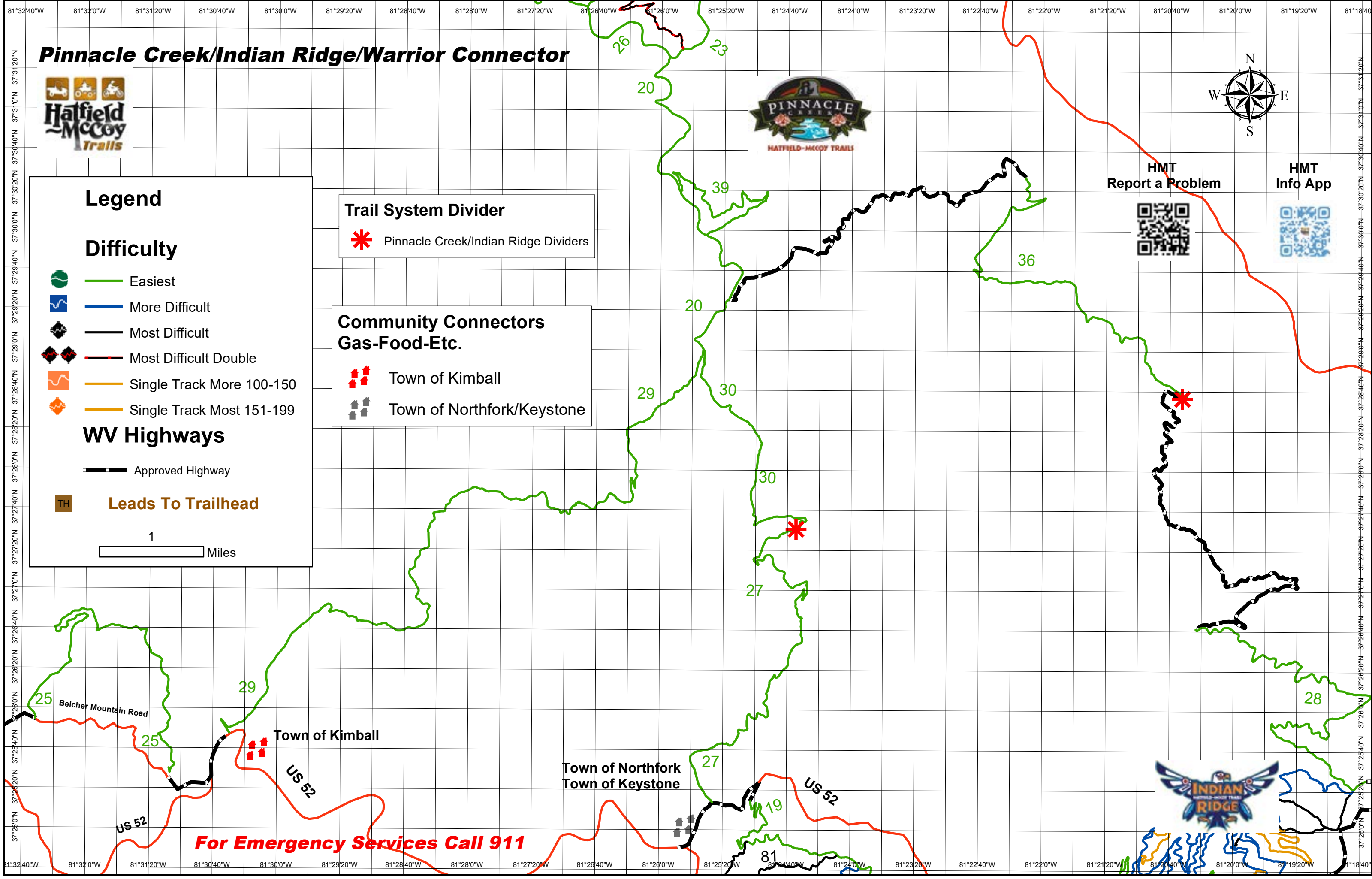
Community Connectors Gas-Food-Etc.

- Town of Kimball
- Town of Northfork/Keystone

HMT Report a Problem

HMT Info App

For Emergency Services Call 911



Warrior Trail System



City of Welch

Town of Kimball

City of Gary

City of War

Legend

★ Warrior Trailhead

Difficulty

Easiest

More Difficult

Most Difficult

Most Difficult Double

Single Track More 100-150

Single Track Most 151-199

WV Highway

Approved Highway

Leads To Trailhead

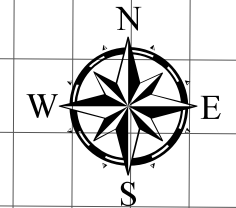
1

Miles

Points of Interest



Overlook



HMT
Report a Problem



HMT
Info App



Community Connectors

Gas-Food-Etc.

City of War

City of Gary

Town of Kimball

City of Welch

For Emergency Services Call 911

Indian Ridge Trail System



**Community Connectors
Gas-Food-Etc.**

Northfork/Keystone

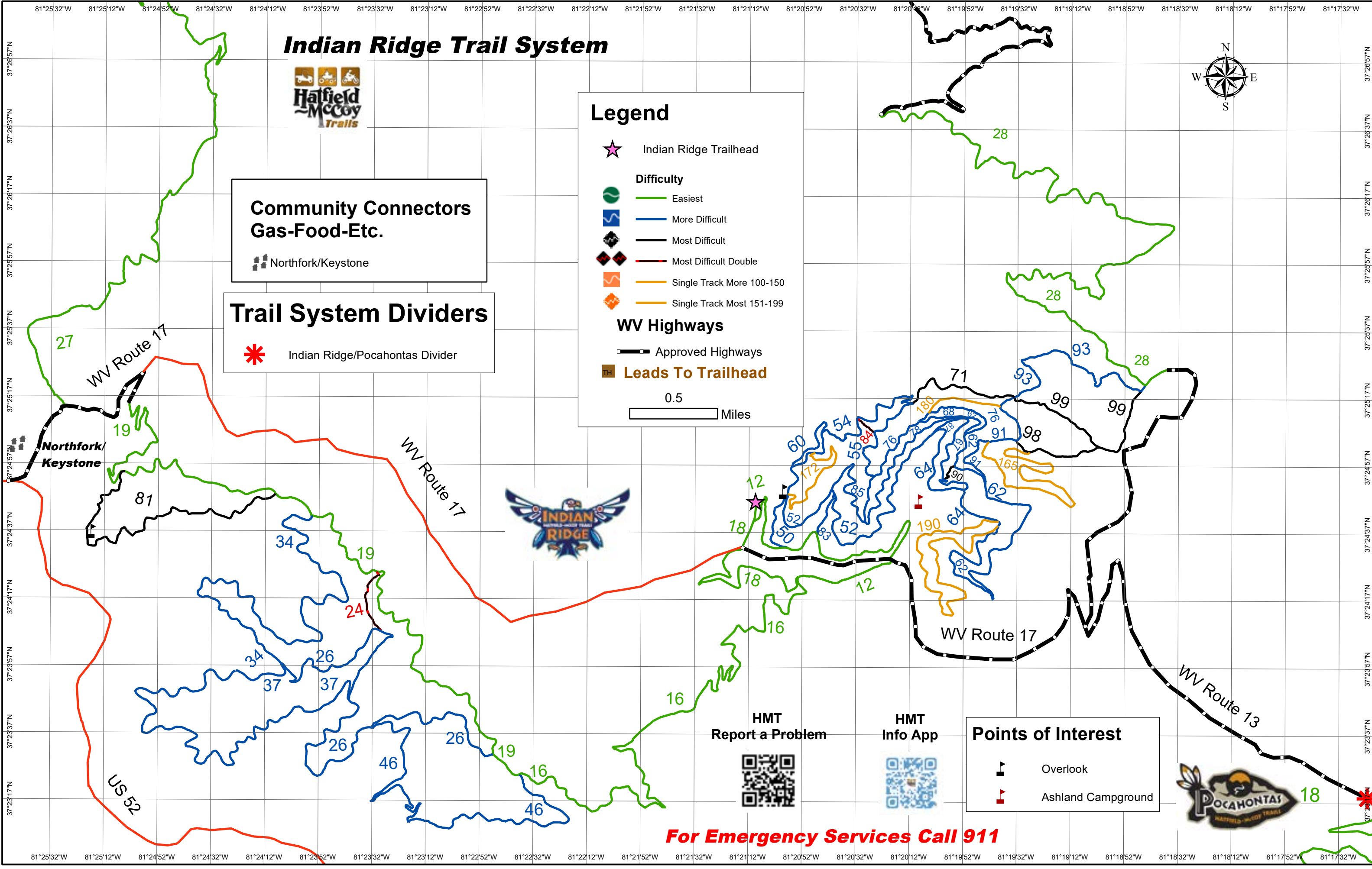
Trail System Dividers

Indian Ridge/Pocahontas Divider

Legend

- Indian Ridge Trailhead
- Difficulty**
 - Easiest
 - More Difficult
 - Most Difficult
 - Most Difficult Double
 - Single Track More 100-150
 - Single Track Most 151-199
- WV Highways**
 - Approved Highways
 - Leads To Trailhead

0.5 Miles



HMT
Report a Problem



HMT
Info App



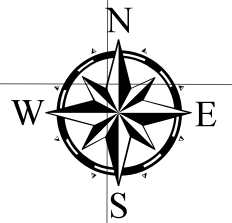
Points of Interest

- Overlook
- Ashland Campground



For Emergency Services Call 911

Pocahontas Trail System



**Danger
Active Mine Site
Stay Out**

Points of Interest

- Coke Oven
- Pond
- Overlook

HMT
Report a Problem



HMT
Info App



To Matoaka
8.5 Miles →

Montcalm

Historic Town of Bramwell

Legend

- ★ Pocahontas Trailhead
- Difficulty**
- Easiest
- More Difficult
- Most Difficult
- Most Difficult Double
- Single Track More 100-150
- Single Track Most 151-199
- WV Highways**
- Approved Highways
- Leads To Trailhead

0.5 Miles

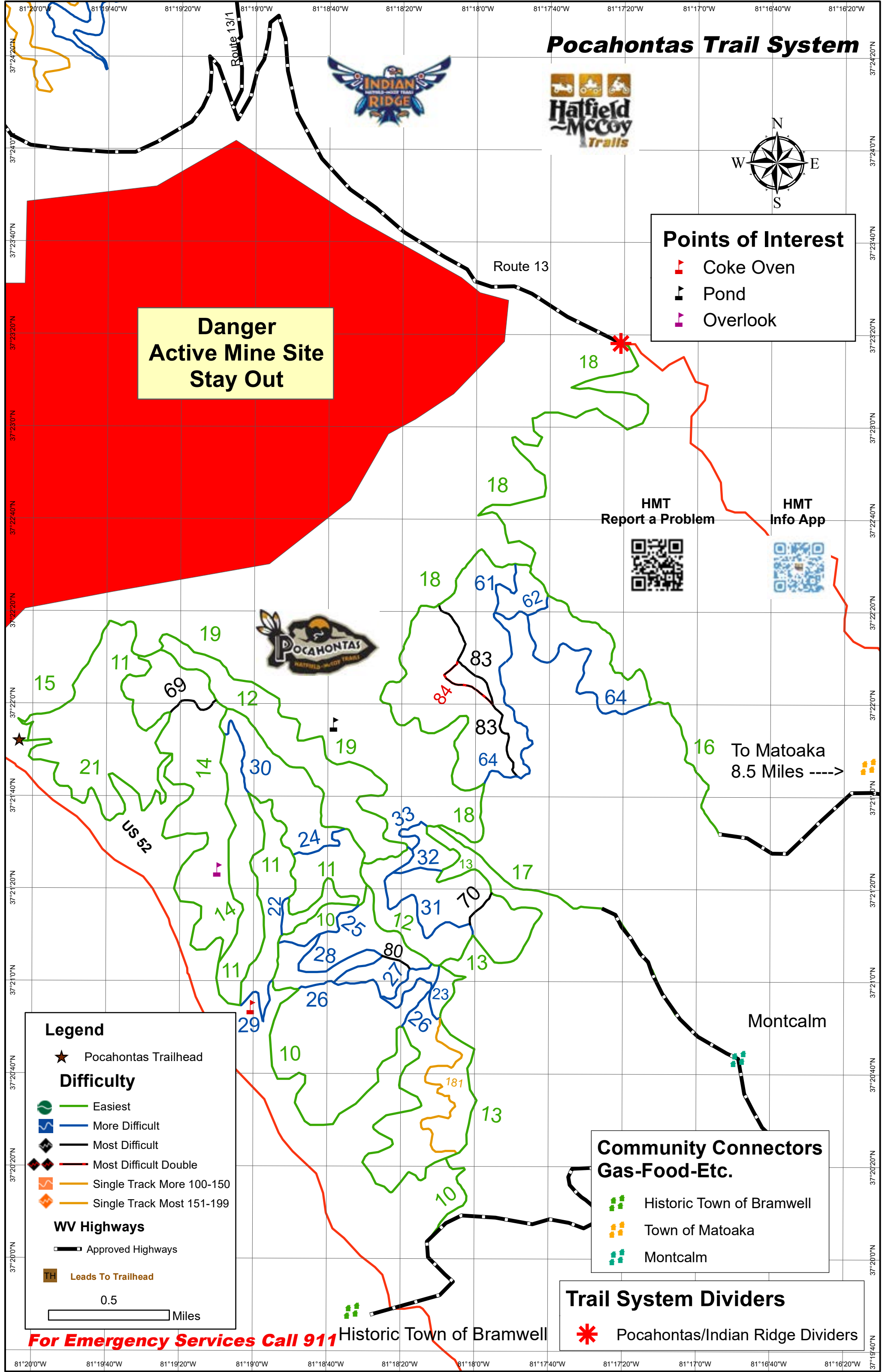
**Community Connectors
Gas-Food-Etc.**

- Historic Town of Bramwell
- Town of Matoaka
- Montcalm

Trail System Dividers

- Pocahontas/Indian Ridge Dividers

For Emergency Services Call 911



PROGRESSIVE[®]



POLARIS[®]



**Hatfield
McCoy
Trails**

TrailsHeaven.com

1-800-592-2217